

# select

MAGAZINE

November/December 2017



**CHRISTMAS IN ALDEBURGH**

**White Lion — 01728 452720**

**Brudenell Hotel — 01728 452071**

**Thorpeness Hotel and Golf Club — 01728 452176**

**Sea Spice — 01728 451800**



# SECKFORD HALL



## ENJOY A FABULOUS CHRISTMAS PARTY AT SECKFORD HALL!

Take a glass of bubbly and enjoy roaring log fires surrounded by magical decorations.

Celebrate with our exquisite food, fine wines and in-house DJ.

This is the perfect environment to embrace the magic of Christmas.

**Christmas Parties available on Thursdays, Fridays and Saturdays  
from 1st to 22nd December 2017**

**For more information please contact our events team on  
01394 385678 or email [events@seckford.co.uk](mailto:events@seckford.co.uk)**

PLEASE QUOTE: SM1 WHEN BOOKING

# Welcome...

## **Publisher**

Alistair Moon  
Tel: 01394 380723



**ADM Media**  
12 Quayside Place  
Woodbridge  
Suffolk IP12 1FA  
01394 380723  
alistair@admmedia.co.uk

## **Advertising Sales Enquiries:**

01394 380723  
07732 468797  
alistair@admmedia.co.uk

## **Design**

Fizzwig Designs  
01473 351270  
studio@admmedia.co.uk

While all reasonable care is taken to ensure the accuracy of information included in the magazine, the publisher takes no responsibility for statements made by contributors or advertisers or for loss arising from typographical errors or non-publication of any advertisement

Design, content and compilation  
copyright © 2017

ADM Media  
All Rights Reserved

Once read, please share our  
magazine with others or recycle

'Tis the season to be jolly, yes it's Christmas again already!

Time to let your hair down and enjoy a great Christmas party, whether it's the Majesty of Hintlesham Hall or Christmas by the sea in one of TA's hotels in Aldeburgh or Thorpeness or, perhaps the newly owned splendour of Seckford Hall in Woodbridge, plus many more, there are great parties waiting to happen.



For a gift selection to suit everyone try a visit to Snape Maltings, from furniture to the garden, to clothes and kitchens and, just about everything in between.

As far as your festive fare goes look no further than Revetts in Wickham Market for turkeys, hams and of course their famous sausages... yummy!

Have a great Christmas and a splendid new year.

A handwritten signature in dark ink, appearing to read 'Alistair Moon'. The signature is fluid and cursive, with a long horizontal stroke at the end.

Alistair Moon



**ADAM GLENCASTLE**  
**Glencastle Financial**  
**Services Limited**

WEALTH MANAGEMENT  
CONSULTANTS



## Mastermind your financial future

We provide an experienced wealth management service and offer specialist advice in a wide range of areas including:

- Investment planning
- Retirement planning
- Inheritance Tax planning
- Protection planning

For further details contact Adam Glencastle on:

**Tel: 07939 395106**

Email: [adam.glencastle@sjpp.co.uk](mailto:adam.glencastle@sjpp.co.uk) Website: [www.glencastlefs.co.uk](http://www.glencastlefs.co.uk)

# What to do in November & December ...

## Shop

Enjoy a festive day out at the Sutton Hoo Christmas Fayre on Saturday 11th and Sunday 12th November from 10.30am until 4.30pm. The Christmas Fayre is bursting with inspiring



ideas for your present list! From Creative crafts and unusual gifts to Artisan food and drink, plus Christmas music and winter story telling. Take a break from shopping in the café for tea and cake or enjoy a glass of mulled wine outside around the yule log. Admission is £3 for Adults and £2 for Children, including entry to the site. (NT. Members free). For more information telephone 01394 389714.

## Listen

The 100-voice Woodbridge Choral Society will present its annual Christmas season concert at 7:30 pm on Saturday evening 2nd December 2017, in St Mary's Church, Woodbridge. The Creation by Franz Joseph Haydn will be the featured work, conducted by Andrew Leach. Robert Gardiner will be the tenor soloist, Adam Maxet the bass soloist, and Charlotte Trepess the soprano soloist. Jessie Ridley will lead the WCS Players.

Tickets are on sale by calling the Honorary Treasurer, Richard Lyon, at 01473 620 775, or by emailing him at [treasurer@woodbridgechoralsociety.org](mailto:treasurer@woodbridgechoralsociety.org). Tickets can also be purchased from Browsers Bookshop in the Thoroughfare in Woodbridge, or through any member of the choir.

## Volunteer

Such is the demand for places at the 11th Ipswich Scout Group, many more adults leaders are needed to satisfy the growing demand for places. The group already provides exciting opportunities and adventure for hundreds of young people between the ages of 6 to 14. This helps them to work as a team, build their confidence and to take a constructive place in the community.

The group's leader Mike



Hollingsworth says, "Finding adult volunteers is the only barrier to providing many more scouting places for young people, existing leaders find scouting activities great fun and very rewarding".

This ambitious group is located in the Castle Hill area of the town and needs new adult leaders to help start new sections for Beavers (6 and 7 years) and scouts (10 to 14 years) and to increase the size of all existing sections including Cub Scouts (8 to 10 years). Volunteers need a sense of fun, be enthusiastic and work as a team. Safeguarding of our young people is paramount, all adults are provided with the training that they need to stay safe, do a great satisfying job and thoroughly enjoy themselves. If you would like to know more contact the group leader Mike Hollingsworth via our website to arrange an introduction.

[www.11thipswichscouts.org.uk](http://www.11thipswichscouts.org.uk)

# What to do

## in November & December ... — continued —

---

### Exhibition

A major new free exhibition has opened in Ipswich – one that sees Cardinal Wolsey's historic angels arrive in his home town for the first time. Christchurch Mansion's appropriately named Wolsey Art Gallery is the setting for the Cardinal's lost masterpieces – four magnificent bronze angels that were designed for his tomb. Wolsey was an Ipswich boy who grew up to become Henry VIII's



Chancellor and right-hand man. At the height of his power he planned a grand tomb, decorated with gleaming angels.

Instead, Wolsey died in disgrace and was buried in the grounds of Leicester Abbey. His grand tomb was used to bury another English legend, Admiral Nelson, and the angels disappeared for centuries. They were eventually discovered on the gates of a golf club and, after two were stolen, a public appeal was launched to “Save the Wolsey angels” and they were bought by the Victoria & Albert (V&A) museum in London for £5 million. Now, thanks to the V&A's generosity and with the support of the Friends of Ipswich Museums, they are the centre piece of an important free exhibition at the Mansion which runs until 11th March 2018. Paintings of Cardinal Wolsey, including an iconic image on loan from the National Portrait Gallery, also feature. Christchurch Mansion opening times (winter): Mondays to Saturdays, 10am to 4pm, Sundays 11am to 4pm.

---

### Music

The quality of music produced by Woodbridge School students is well known. What better way is there of spending a lunchtime than being serenaded by some of the school's best players? The new head of music at the school, Chris Milton, has linked up with Woodbridge Library to create a series of lunchtime events during November and culminating in a full-length evening concert in early December. There will be four free events at lunchtimes during November, two at the school and two in the Library and all on Tuesdays. On 7th November at 12.45pm in the Library the music will be provided by string players. A week later, the 14th November concert will be in Woodbridge School Hall at 1.30pm and will feature wind players. Singers will then perform at the Library on 21st November at 12.45pm. The last of the four events will be in the School Hall at 1.30pm and will feature brass and percussion players. Closing this series on Saturday 2nd December, the school's Chamber Orchestra will give a concert in the Library at 7.30pm. Tickets for this will cost £8 (£4 for students) to include the price of an interval drink and are available from the Library. All proceeds will go towards the work of the Library.



# WOODHALL MANOR



## PARTY IN STYLE WITH OUR 1920s THEMED CHRISTMAS PARTY NIGHTS!

Enjoy fabulous food, fine wine, creative cocktails and dreamy desserts in our fabulous Art Deco style Ballroom, followed by music and dancing in the Long Bar Venue.

Our Roaring 20s evenings are available on an exclusive basis or as shared parties, whichever you prefer. So, grab a glass of bubbly and get ready to be transported back to the 1920s – think flapper dresses, Hollywood glamour and fabulous feathers!

Email [info@woodhallmanor.com](mailto:info@woodhallmanor.com) or call 01394 411 288 for further details

PLEASE QUOTE: SM1 WHEN BOOKING

WOODHALL MANOR • WOODHALL DRIVE • SUTTON • WOODBRIDGE • SUFFOLK • IP12 3EG

# The Festive Season at Ufford Park Woodbridge

It's never too early to book for Christmas!

## Boxing Day Lunch

from 12 noon

£29.95 per adult | £17 per child (5 -12 years old)

Children under 5 years old FREE

## Festive Lunch

Looking for somewhere to hold your festive lunch?  
We can offer anything from a private room for a large party, to a smaller room for an intimate family gathering.

**2 courses £14.95 | 3 courses £16.95**

Prices are per person

† 0844 499 1642 (local rate)

w [www.uffordpark.co.uk](http://www.uffordpark.co.uk)



Yarmouth Road | Melton | Woodbridge | Suffolk | IP12 1QW



# Wedding Show

at Ufford Park Woodbridge

## Sunday

## 21st January

### 11:00am - 3:00pm

**FREE  
ENTRY**

ALL WELCOME

Several of our favourite suppliers will be at the show including florists, photographers and jewellers.

† 0844 499 1642 (local rate)

w [www.uffordpark.co.uk](http://www.uffordpark.co.uk)



Yarmouth Road | Melton | Woodbridge | Suffolk | IP12 1QW





Merry Christmas



# New era for historic Seckford Hall

New owners of historic Seckford Hall pledge to “Bring hotel back to life with great food and warm friendly service”

Seckford Hall Hotel– has recently been purchased by The Heritage Rocks Group – owned by entrepreneur and visionaries Michael Chittenden and Tammy Madge, from the founders of the early social networking site Friends Reunited.

The group also owns nearby Woodhall Manor, a successful wedding and events venue along with a collection of properties and regeneration projects across the country.

Michael Chittenden co-founder of the group said, “This is very much a dream come true for me,” adding. “This was where my parents brought me for special occasions when I was a boy – it was always the ‘place to go’.

“It has maintained a great reputation over the years, but I do feel there’s a lot we can do to raise the customer experience based on what we have achieved at our other venues. We will also be investing in those areas which have become a little tired while being sensitive to the Grade II listing.”

The dynamic management team who together have years of experience and track records within the hospitality industry will oversee an exciting refurbishment and implement modern standards within the hotel.

Garth Wray, has been appointed as General Manager and brings with him over 20 years of industry experience and expertise. His

experience includes managerial positions at The Langham, London, Wentworth Club, Surrey and The Bath Spa Hotel to name just a few. Garth will oversee the day to day running of the business as well as leading Seckford through a number of exciting project plans in 2018.

Luke Bailey has been appointed Head Chef, having previously worked at The Crown at Woodbridge and Norma in Copenhagen.

With his passion for foraging Luke can often be found in the great outdoors collecting wild coastal vegetables such as sea-beet, sea-purslane or sea-kale that he incorporates into his ‘elegant but earthy’ food. His passion began when he lived and worked in Woodbridge and spent a lot of time swimming, fishing and crabbing on the Deben estuary which eventually turned into a new hobby of foraging for fresh and healthier ingredients.

With Garth and Luke’s love for the region’s food, the restaurant at Seckford Hall will offer Great British dishes with a modern twist and is guaranteed to be a popular destination this season.

New festive menu is available from 1st December 2017 for lunch, dinner and afternoon tea.

**For more details please contact  
01394 385 678.**

# **E. W. REVETT & SON**

## **NOW TAKING CHRISTMAS ORDERS**



**High-Class Butchers and Poultry  
Our Pork Sausages a Speciality**



Locally produced Pork,  
Beef and Poultry.

*Ready Meals and much more!*

Delicatessen, Cheese,  
Vegetables,

*Fresh Bread and Cakes daily.*

**High Street, Wickham Market, Suffolk IP13 0RA**

**Telephone: 01728 746263**

**[www.revett.co.uk](http://www.revett.co.uk)**

# RILEY & RILEY

FINE JEWELLERY



Hand-made by Mark Riley

Anabelle & Anouska Rings

From around £200.00 in Gold (Also available in Silver)

## R&R

52 Buttermarket, Ipswich, IP1 1BT 01473 231212

122-124 High Street, Aldeburgh, IP15 5AB 01728 452431



9ct White & Rose Gold Diamond Filigree Pendant & Chain £249.00



18ct Yellow Gold Ruby and Diamond Heart Pendant & Chain £850.00



V Jewellery Silver Ira Bracelet £265.00



V Jewellery Silver Runa Earrings £125.00



Kit Heath Silver Twine Thorn Exquisite 30" Necklet £120.00



Silver Unique Amber Ring £96.00



9ct White Gold Oval Tanzanite and Diamond Ring £350.00



Muru Rose Gold Vermeil Harmony & Wellbeing Purity Mandala Studs £42.00



18ct White Gold Tsavorite Garnet & Diamond Cluster £2500.00



Hand-made Silver Bangle & Hand Carved Heart Charm by Mark Riley £195.00

## RILEY & RILEY

FINE JEWELLERY

52 Buttermarket, Ipswich,  
IP1 1BT 01473 231212

122-124 High Street, Aldeburgh,  
IP15 5AB 01728 452431



Hand-made Solid Silver 'Aldeburgh Pebbles' by Mark Riley from £100.00

# Christmas At Snape Maltings



## Music

**Fri 1 – Sun 10 December**

### **Christmas Spectacular in the Land of Oz**

A festive extravaganza presented by Co-op Juniors Theatre Company.

**Fri 15 – Sun 17 December**

### **Christmas Weekend**

Festive family activities and concerts across Snape

**Friday 15 December**

### **Fantasia on Christmas Carols**

Seasonal classical favourites by Vaughan Williams and Vivaldi

**Snape 7.30pm**

**Saturday 16 December**

### **Father Christmas Arrives by Thames Barge**

Join us for this wonderful Suffolk tradition and meet Father Christmas in the House & Garden shop.

**12.30pm** (approx)

### **BBC Radio Suffolk Carol Concert**

A celebration with music, carols, readings and a chance to join in. In aid of BBC Children in Need.

**Britten Studio, Snape 4pm**

### **Saturday 16 December Norwich Cathedral Choir**

Britten's *Ceremony of Carols* by, music by Tavener and John Rutter and favourite traditional carols.

**Snape 7.30pm**

**Sunday 17 December**

### **Family Crafts**

Festive craft making at the Concert Hall Café.

Just drop in and enjoy!

**Sunday 17 December**

### **The Snowman & Paddington Bear's First Concert**

A Christmas classic and a beloved bear on a big screen accompanied by live orchestra.

**Snape 2pm & 4pm**

### **November & December Creative and colourful play**

Little Rascals

**December**

### **Peace Tree**

Write messages on baubles and add them to the tree outside the concert hall.

### **Workshops at the Tack Room**

**14 December**

### **Floral Art:**

### **Christmas Wreath**

Helen Newman guides you through making a stunning festive door wreath

**10am – 12.30am**

### **Floral Art:**

### **Christmas Table Piece**

Create a stunning table piece from seasonal material with Helen Newman

**2pm – 4.30pm**

## Eat

**November & December**

### **Christmas hampers, food & drinks tastings**

**Food Hall**

## Shops

**Sat 23 December**

### **Christmas Farmers' Market**

A special festive market with delicious local food and drink.

**9.30am – 1.30pm**

**4 Nov – 24 Dec**

### **Christmas Trail**

Pick up a Christmas Trail map from our Visitor Centre or Little Rascals and find the characters around Snape Maltings.

**Box Office: 01728 687110**

**Retail: 01728 688303**

**Snapemaltings.co.uk**



Supported using public funding by  
**ARTS COUNCIL  
ENGLAND**

**Snape  
 Maltings**

# Be inspired.



An emporium selling a wide variety of unique Christmas gifts and decorations, set in a remarkable collection of redeveloped Victorian industrial buildings located on the Suffolk Coast.

**SNAPE  
MALTINGS**  
[snapemaltings.co.uk](http://snapemaltings.co.uk)



# Support Hospice with two great festive events

## The brilliant Inflatable 5k Santa Run is returning to Trinity Park, Ipswich on Saturday 2nd December 2017!

The fun-filled 5k course is complete with ten fantastic inflatable obstacles, including two new challenges for this year called 'Bish Bash' and 'The Plummet'! Participants are also encouraged to take part in full Santa costume for a small additional fee!

Once again local charity St Elizabeth Hospice is the charity partner to the event, and participants are asked to make a small donation when signing up on the official UK Running Events website.

The hospice would also love for participants to raise extra funds by getting sponsored to take on this brilliant inflatable challenge. You can register for a hospice giving page online at: [giving.stelizabethhospice.org.uk](http://giving.stelizabethhospice.org.uk) with every penny helping the hospice to provide vital care and support local people and their families.

Prices are £25 per person or £15 for a child, however group discounts are available. There are



six waves throughout the day from 8am until 3pm, and everyone who takes part will receive a medal at the end.

The annual Christmas Day Dip, an icy plunge in to the cold North Sea, will take place on Felixstowe sea front at 10am on Christmas morning.

Catherine Sheppard, events and challenges fundraiser at St Elizabeth Hospice, said, "This will be our 14th Christmas Day Dip and it's gathering quite a following. We now have around 400 people take part each year and see this as the start of their festivities on the day. Their friends and family all come along to watch and there's a fantastic atmosphere as everyone gathers to run in to the sea."

Joining the dippers this year for the first time will be the Mayor of Ipswich, Sarah Barber, and the Mayor of Felixstowe, Nick Barber.

The event is short and ends following a short dip in to the sea. As they emerge from the water, all participants will receive a medal as a keepsake to remember the day before returning to the warm to enjoy their Christmas turkey.

Find out more about the challenges and raising sponsorship by contacting the hospice fundraising team on 01473 723600, email [fundraising@stelizabethhospice.org.uk](mailto:fundraising@stelizabethhospice.org.uk) or go to the website [stelizabethhospice.org.uk/events](http://stelizabethhospice.org.uk/events)



Live orchestra, 100 performers,  
stunning music and dance

The award-winning Co-op Juniors Theatre Company



**Snape Maltings  
December 1 to 10**

**Book 01728 687110  
coopjuniors.co.uk**



Visit [coopjuniors.co.uk](http://coopjuniors.co.uk)

★ No booking fee ★ Free parking  
★ Group & Over 60s offers



## Festive treat returns to Snape Maltings: **Christmas Spectacular in The Land of Oz**

Journey to the mystical Land of Oz and get into the Christmas spirit early this year with a song and dance Christmas Spectacular by the Co-op Juniors Theatre Company.

The award-winning youth group has wowed audiences at the world-renowned Snape Maltings Concert Hall, near Aldeburgh in Suffolk for 12 years. The East Anglian Daily Times called last year's Christmas Spectacular "as glitzy and glamorous as anything you would see on the West End stage".

As the biggest youth production in the UK, the production boasts a live orchestra and jaw-dropping stage effects. It is packed with familiar musical numbers performed by a cast of almost 100 in stunning costumes.

This year's original story is inspired by the characters in *The Wizard of Oz* and features Dorothy Gale, the Lion, Tinman and Scarecrow who challenge the Wicked Witch of the West and set off for a musical adventure through the Land of Oz to recover the spirit of Christmas.

Audiences travel from all over East Anglia for this annual festive treat with its infectious combination

of music, dance and sheer spectacle, which opens on 1st December for 12 performances until 10th December.

"We celebrate Christmas in a unique way with this production," says director Rebecca Darcy. "The young cast bring an energy and enthusiasm to some fabulous, familiar musical numbers that the whole family can enjoy.

"We're thrilled to be back at Snape Maltings for our 13th year of Christmas Spectacular, and that so many people choose to make our show an annual event. The spirit of Frank Baum's characters lives on in this special festive story which has been written exclusively for Snape," she added.

Book tickets at [snapemaltings.co.uk/spectacular](http://snapemaltings.co.uk/spectacular) or call 01728 687110. For more information visit [coopjuniors.co.uk](http://coopjuniors.co.uk). Tickets are from £15, with special discounts for groups and over 60s. There's free parking and no booking fee.

# WE DON'T TRIFLE WITH CHRISTMAS



Eat, drink and be merry as often as you like, in our welcoming, bustling seaside brasserie where people feel happy.

Per person

FESTIVE LUNCHESES SERVED MONDAY TO SATURDAY – 2 COURSES £14 OR 3 COURSES £18

FESTIVE AFTERNOON TEA £15 • CHRISTMAS EVE SUPPER £35

CHRISTMAS DAY LUNCH £90 • BOXING DAY LUNCH £35

NEW YEAR'S EVE BLACK TIE CELEBRATION £90

BRASSERIE *Bleue*



The White Lion Hotel, Market Cross Place, Aldeburgh IP15 5BJ 01728 452720 whitelion.co.uk



## A SCENE MADE FOR WINTER DAY

Candlelight glowing over rich, dark wood, casting a myriad of reflections and exotic spices in the air. Start with a cocktail or craft beer in the bar, before indulging in the heat of exotic Indian cuisine.

INDIAN CUISINE

# SEA SPICE

ALDEBURGH

For spirited celebrations  
call 01728 451800

The White Lion Hotel, Market Cross Place,  
Aldeburgh, Suffolk, IP15 5BJ  
01728 451800 seaspice.co.uk

# Enjoy a magical Christmas by the sea at Aldeburgh

There is something truly magical about celebrating the festive season by the sea on Suffolk's Heritage Coast. Aldeburgh takes on a magical atmosphere with colourful twinkling lights adorning the High Street, a giant Christmas tree and shops overflowing with gifts. It's also a special time to enjoy with friends and family, whether you want to party the night away, dine with your chosen guests or simply relax with a bottle of fine wine.



With three superb restaurants and a private dining room overlooking the sea at Aldeburgh, the TA Hotel Collection has all you need for a wonderful festive season. Menus focus on local produce from land and sea, you can choose from traditional festive food, British cuisine with a French twist or exotic Indian dishes.

Entertainment at the seafront White Lion Hotel includes all singing all dancing fun party nights, a chance to lunch with Santa and sparkling afternoon teas by the sea, or you can relax and enjoy a great value festive lunch in the family friendly Brasserie Bleue.

## Christmas Party Weekend

The popular Christmas party nights return to the White Lion for just one weekend on Friday 8th and Saturday 9th December. Gather friends or family



and make up your own table, or share a table with other party goers, and enjoy a great fun night out in the fabulous festive atmosphere. Arrive early and enjoy a drink in the bar, then sit down to a three-course dinner in Brasserie Bleue from 7pm followed by coffee and a boogie to the hotel's resident DJ.

## Lunch with Santa

Treat the family to a three-course lunch in Brasserie Bleue from 12noon on Sunday 3rd December; there's a choice of festive dishes including roast turkey for mains as well as roast sirloin of beef, grilled sea bass or vegetarian options. Santa and his reindeer have promised to visit bringing gifts for all the children and there's also plenty of games and activities to keep the youngsters happily entertained.

On other days between 1st and 23rd December families can also enjoy some traditional Christmas cheer before the big day in the informal restaurant. A great value, lunchtime festive menu will be served between 12noon and 2.30pm, while an à la carte menu will also be served in the evenings.

Changing monthly, the popular series of themed afternoon teas at the White Lion also continues during December with a Festivi-Tea featuring all your favourite seasonal treats including a mincemeat bakewell tart and rich Christmas fruit cake, plus your choice of tea, coffee or hot chocolate.

### Exotic festive feasts at Sea Spice

The White Lion's second restaurant, Sea Spice, offers classic and contemporary Indian cuisine created from local produce; its dark wood interior and deep rich colour tones reflect the warmth and glow of Christmas.

This year Sea Spice is offering a special party menu for lunch and dinner between Friday 1st and Saturday 23rd December, in addition to its à la carte dishes. You can also welcome in 2018 at Sea Spice with an indulgent evening centred around exotic food, delightful drinks, fantastic entertainment and good company. Celebrations start at 7pm, then after dinner you can dance your way into the New Year.



### Festive dining at the Brudenell

The Seafood & Grill at Aldeburgh's Brudenell Hotel offers merry Christmas celebrations and chic fine dining at a gentler pace with menus focusing on the fresh catch and seafood as well as locally sourced meat and game. Savour an unhurried lunch or a gastronomic feast as you dine by candlelight in the evening looking out to sea through the floor-to-ceiling windows.

Take time out from your festive preparations and book a relaxing jazz Sunday lunch in the Seafood & Grill between 5th November and 17th December. Dine to the gentle sounds of smooth jazz with Keith Monk on piano and Tamas Farkas playing the guitar - perfect to indulge your love of fine food and live music.

If you prefer a private celebration shared with up to 22 of your chosen guests, book the Avocet room at Aldeburgh's Brudenell Hotel for lunch or dinner. Add some fine wine, fantastic food, a Christmas tree, glowing candles and wonderful views straight out to sea and you have the perfect setting for some festive fun. You can discuss your menu with the hotel's Head Chef and even add your own decorations.

#### How to Book

For details and to book a table at Bleue Brasserie or Sea Spice at the White Lion call 01728 452720 or visit [www.whitelion.co.uk](http://www.whitelion.co.uk) and [www.seaspice.co.uk](http://www.seaspice.co.uk) or for the Seafood & Grill at the Brudenell Hotel Tel: 01728 452071, [www.brudenellhotel.co.uk](http://www.brudenellhotel.co.uk)



## DELICIOUS DAYS

Celebrate in great style over an unhurried candlelit meal looking out to a winter's sea, enjoying fresh seafood and enticing dishes followed by irresistible puddings and cheeses.

CHRISTMAS EVE SUPPER £45

CHRISTMAS DAY FEAST £95

BOXING DAY LUNCH £45

NEW YEAR'S EVE BLACK TIE CELEBRATION £110

PRIVATE DINING IN AVOCET ROOM

### JAZZ SUNDAYS

Indulge your love of food and music  
Sundays 5 November to 17 December

01728 452071 [brudenellhotel.co.uk](http://brudenellhotel.co.uk)

The Brudenell Hotel, The Parade, Aldeburgh IP15 5BU

*Seafood*  
&  
Grill

## MASQUERADE THEMED PARTY NIGHTS THROUGHOUT DECEMBER!

Friday 1st, Thursday 7th, Thursday 14th December  
2 course meal & disco, £26 per person

Saturday 2nd, Friday 8th, Saturday 9th,  
Friday 15th, Saturday 16th December  
3-course meal & live music, £39 per person

### NEW YEAR'S EVE

5-course meal, live music from the 'phil jackson  
rock 'n' roll band' and fireworks at midnight as  
you raise your glasses to 2018.  
£92 per person

To book your party night call 01728 451021  
or email [events@thorpeness.co.uk](mailto:events@thorpeness.co.uk)  
Please call or email to book



## CELEBRATE THE FESTIVE SEASON IN STYLE



Thorpeness Country Club, The Benthills,  
Thorpeness, Suffolk IP16 4NU | [thorpenesscountryclub.co.uk](http://thorpenesscountryclub.co.uk)

lighthouse



# “It’s behind you!”

## *Our Guide to the area’s festive offerings*

On her birthday Melody, the Little Mermaid, is granted legs for one day by her father the sea king Triton. Once on land she desperately wants to stay so she can win the heart of the boy she has fallen in love with. Her father forbids it but Melody finds another more dangerous way to get onto land again. Soon not only is she in peril but so are the kingdoms of both Land and Sea.

Does Melody find her love? Do her sisters and father manage to save her or will evil prevail? With Sea Hags plotting, Dames confusing things and some magical goings on, who knows what will happen. Join the Deben Players at the Seckford Theatre, Woodbridge School for The Little Mermaid – A pantomime, by Simon Dodwell this Christmas and find out. Performances from the 22nd through to the 30th December 2017. Check the website at [www.debenplayers.net](http://www.debenplayers.net) for full performance dates and times.

Tickets can be booked at [debenplayers.net](http://debenplayers.net) or by calling our box office on 0333 666 3366.

Lovlace’s Boots & Shoes hasn’t seen much action lately, but Elvira is hopeful, there’s still a few weeks left, right? Everyone needs shoes, and they’re the only shoe shop in town.

Elvira has bucket-loads of talent, her shoe designs are legendary, just ask her best buddy Frank. It’s just a shame her boyfriend Englebert doesn’t appreciate her, er, we mean her shoes... But he’s a catch, everyone says so! And then there’s Elvira’s father – Norbert - who has owned the shop all his life, and knows exactly what people want... better than the customers know themselves! Who wants fancy green Wheezies when you could have sensible grey boots? Elvira dreams of the perfect Christmas... and making an honest man out of Englebert, but it’s going to take some serious help from two very special visitors to turn things around! Together, can Elvira, Frank and the Elves work their magic to save the shop, overcome the odds and make all of Elvira’s wedding dreams come true... All before Christmas Day?

Join Red Rose Chain to find out! The Elves & The Shoemaker will be at the Avenue Theatre, Ipswich from 7th until 31st December. To book tickets visit [www.redrosechain.com](http://www.redrosechain.com) or telephone the Box Office on 01473 603388.



• More overleaf

# “It’s behind you!”

## *Our Guide to the area’s festive offerings*

Leiston's acclaimed Bright Sparks Theatre Group invite you to enjoy the enchanted tale as old as time, as Beauty and the Beast is brought to life in their traditional family pantomime. A handsome Prince is cursed by an evil witch and transformed into a hideous creature, but when kind-hearted Belle accidentally arrives at his castle, they gradually become fond of each other. Can true loves first kiss break the curse? Beauty and the Beast will be at the Leiston Film Theatre from Thursday 11th and Sunday 14th January to book tickets contact the Box Office on 01728 830549 or visit [www.leistonfilmtheatre.co.uk](http://www.leistonfilmtheatre.co.uk)

A DanceEast season would not be complete without something magical for children. This Autumn Ipswich’s Jerwood DanceHouse will welcome a festive exclusive, from Wednesday 13th until Sunday 17th December.

By kind permission of The Estate of Mary Norton, and commissioned by DanceEast, The Borrowers will capture the imagination of children, families and people of all ages, based on Mary Norton’s much-loved book. It is a ‘see it first at DanceEast’ moment before the production will tour throughout 2018, offering DanceEast’s audiences the chance to get swept up in the world beneath the floorboards. Contemporary dance, physical theatre and animation will bring this story about tiny people to life, taking the theatre on a magical journey of discovery as The Borrowers flee their home, overcome fear and danger, taste freedom and adventure before finally finding a safe place to make a new life. It is the perfect festive treat for all the family, suitable for age 5+ years. To book tickets contact the Box Office on 01473 295230 or visit [www.danceeast.co.uk](http://www.danceeast.co.uk)

Loosely based on the story by E.T.A. Hoffmann, The Nutcracker ballet opens with the lively Christmas party that is hosted by the Stahlbaum family, its Victorian setting captured in opulent detail by Julia Trevelyan Oman’s designs. Wright’s choreography ingeniously incorporates surviving fragments of the ballet’s original material, including the sublime pas de deux for the Sugar Plum Fairy and her Prince. But in emphasizing the relationship between Clara and the Nutcracker Prince, the production also gains a touching subtext of first love. The Nutcracker is at The Cut Halesworth on Tuesday 12th December. To book tickets contact the Box Office on 0300 3033 211.



# MARLESFORD —MILL<sub>A12 • MARLESFORD</sub>

**CHRISTMAS DECS NOW IN!**

New stock arriving daily

- ❄️ Gorgeous Gifts for Christmas ❄️
- ❄️ Huge selection of Vinyl ❄️
- ❄️ Costume Jewellery ❄️ China ❄️
- ❄️ Lights ❄️ Mirrors ❄️ Lanterns ❄️
- ❄️ Tables ❄️ Chairs ❄️

01728 748076  
[info@marlesfordmill.co.uk](mailto:info@marlesfordmill.co.uk)

FOLLOW US @ MARLESFORDMILL

“our food speaks for itself”

Winner: Suffolk Food & Drink Awards 2017 — Best International Restaurant  
TripAdvisor Award for Excellence 2013 – 2017

Join us for our annual  
Woodbridge tradition!



# Christmas at The Galley!

We are open for lunch  
on **Christmas Eve**  
and **Christmas Day.**

***The Galley* Gift Vouchers**

Always available in any denomination;  
the perfect Christmas gift.



21 Market Hill, Woodbridge,  
Suffolk IP12 4LX  
01394 380055

News and menus at  
[www.galley.uk.com](http://www.galley.uk.com)



# Choosing the perfect Real Christmas Tree

*with David Mitchell, the UK's real tree expert*

1. Don't wait until the last minute to buy your tree – they are all cut around the same time so buying early means you have the widest choice and can start caring for your tree as soon as possible.
2. Buy a tree that has had the netting removed for display – that way you can see the shape and be confident the tree has been looked after. Trees left in netting can begin to form a micro climate where the centre warms up making them more prone to needle drop and can shorten its life.
3. The colour of the needles should be a dark green rather than pale and washed out, and should feel waxy to the touch, not dry. David Mitchell (Wyevale Garden Centres' Real Christmas tree buyer) recommends you should stroke the tree to see if needles come off easily.
4. Keep your Christmas tree fresher for longer by chopping or sawing a few centimetres off the bottom and soaking it in a bucket of water outside, either overnight or for as long as possible, before bringing it inside.
5. If you're concerned about needle-dropping choose a variety of tree such as the Nordman Fir, which is known to retain its needles.
6. Once you've brought your tree inside make sure you fill the stand with water to continue to feed the needles.
7. Keep your tree away from direct sunlight, draughts and heat from radiators and fireplaces to avoid drying it out and shortening its life. Ideally, try to use LED tree lights which emit less heat and are better for the environment

# Christmas at the Hall



Christmas is nearly here but it is not too late to get organised. Just think ... traditional decorations, stunning trees, thousands of twinkling bright lights, roaring log fires and the aroma of mulled wine...

*A very warm welcome  
to Hintlesham Hall*

## **Festive Fayre Lunch**

Available Monday–Saturday  
20th November until 21st December 2017  
12 noon - 2.00pm

Glass of Buck's Fizz and Chef's selection of canapés on arrival, a delicious choice 3-course menu, coffee and mince pies – £31.50 per person

## **Christmas Party Nights**

Why not bring your party to one of our popular Christmas Party Nights and celebrate in style! (from an intimate party of 2 to a large group of 110). Arrive from 7.00pm for 7.45pm sit down. Prosecco and Chef's home made canapés, 3 course Christmas meal and then either dance to music from our resident DJ or relax in the lounge. See website or call for dates.

## Sunday Festive Fayre

26th November until 17th December.

12 noon to 2.00pm

£35 per person.

## Boxing Day Lunch

Tuesday 26th December, 2017.

12 noon to 3.00pm

Live music and a mouthwatering lunch.

£55 per adult £27.50 child

(under 5s free)

## New Year's Eve

### Dinner & Dance

Sunday 31st December, 2017

7.00pm to late

A spectacular evening to welcome in the New Year. 5-course meal. Piper, resident DJ and fireworks finale at midnight. Black tie event and a glass of champagne at midnight included into the price.

£165 per person

## New Year's Day Jazz Lunch

Monday 1st January, 2018

12.30 to 2.30pm A three course lunch with music from the Gipping Valley Trio Jazz Band. £42.50 per person, £25 child 5-12yrs (under 5s free)

Call Tracy or Julie on 01473 652334

email [reservations@hintleshamhall.com](mailto:reservations@hintleshamhall.com)

web [www.hintleshamhall.com](http://www.hintleshamhall.com)



# HINTLESHAM HALL

SUFFOLK

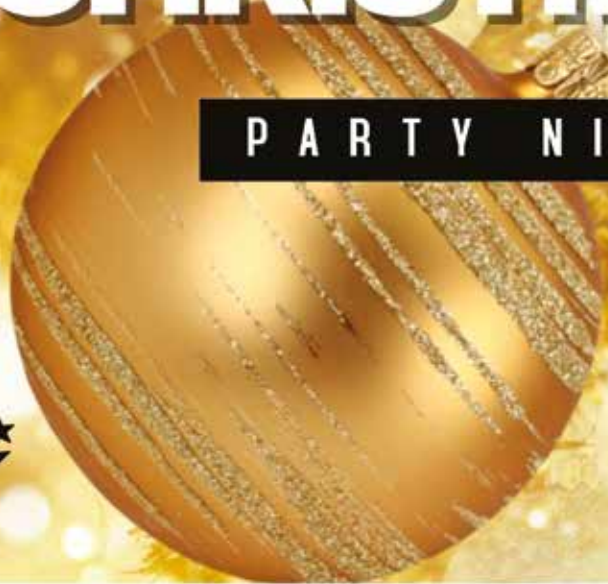


THE BULL INN



**CHRISTMAS**

PARTY NIGHTS



**CHRISTMAS PARTY NIGHTS**

3 COURSE MEAL £22.95

**LIVE MUSIC  
EVERY WEEKEND**



FOR BOOKINGS PLEASE CALL 01394 382 089-2 MARKET HILL WOODBRIDGE



# Theatre Company tour with Two Festive Offerings

The Common Ground Theatre Company are touring East Anglia this Winter with two fabulous productions.

## **The Old Curiosity Shop Touring East Anglia - 25th October to 25th November 2017**

After their acclaimed touring productions of *The Unhappy Medium* & *Phantom Bantam of The Opera* in 2016, Common Ground return with this riotous, theatrically inventive adaptation, with original live music by Pat Whymark, and featuring Julian Harries as (among others) Nell's grandfather, Samson Brass and Mrs Jarley.



## **Sherlock Holmes and the Hooded Lance Touring East Anglia - 15th December to 12th January**

Julian dons the famous deerstalker yet again for a classic comedy Christmas mystery with all the Common Ground trimmings - sparkling wit, ingenious staging, hilarious songs, and surreal flights of festive fancy.

Julian Harries and Dick Mainwaring continue their long-standing acting partnership. Holmes and Watson faces their stiffest challenge yet, in the shape of the Hooded Lance, their newest and deadliest adversary, who is hell bent on spoiling everyone's Christmas and being really annoying!

"Little" Nell Trent lives with her devoted grandfather in his London shop, a magical place filled from wall to wall with dust-laden treasures. He keeps his nocturnal gambling a secret but becomes deeply in debt to the villainous loan shark Quilp. When he gambles away what little money they have, *The Old Curiosity Shop* is seized by Quilp as payment and Nell and her grandfather are forced to flee London. On the run, and with Quilp on their trail, the pair fall in with a succession of colourful characters, some friendly, some ominous. Over time, she becomes the parent and he the child, a burden which starts to take its toll on her.

Can our intrepid duo save the festive season from the clutches of this dastardly demon. Can they cook his goose, or will he crush their baubles and make prize turkeys of them?"

Created by writing team Pat Whymark and Julian Harries, best known for their hugely successful Christmas shows for Eastern Angles Theatre Company (including last year's smash hit, *Stoat Hall*) and for their own company, Common Ground.

---

**For performance dates for both shows and to book tickets visit [www.commongroundtc.co.uk](http://www.commongroundtc.co.uk)**

---

Visit our extensive showroom and  
you'll be sitting pretty.



**SALE NOW ON**



**anglia** recliners

**Monday-Saturday 9.30am-5pm Sunday & Bank Holidays 10am-4pm**

**Unit 5 & 6, Wilford Bridge Rd, Melton, Woodbridge, Suffolk IP12 1RJ**

Tel/Fax **01394 386290**

**[www.angliarecliners.co.uk](http://www.angliarecliners.co.uk)**

# Homes & Gardens



Picture: Marks and Spencer



# **Beat the Burglars** **Home Security Tips**

**As the nights draw in and temperatures drop and we start to prepare for the onset of winter, we need to be mindful that burglars often strike under the cover of darkness. Timber Alternative window and door manufacturers Evolution Windows, have some useful tips to making your home safe and secure this winter.**

Research shows that in the UK, burglars strike every 40 seconds. Families with children are likely victims and 56% of burglaries happen at night. You are six times more likely to be burgled without both window locks and double locks or deadlocks on outside doors. 73% of burglars use doors to enter a property and in 3% of cases the door is unlocked!

***Here's how your home more secure:***

- Remember to lock all doors and windows
- Fit a burglar alarm and ensure it is visible to potential thieves
- Keep valuables and all house and car keys out of sight
- Fit outside security lighting
- Join your local Neighbourhood Watch scheme
- When recycling fold up any packaging that offers a clue to what your home contains
- Take care what personal information you share on social media (such as telling everyone when you are going on holiday)
- Make your home look occupied while you are out or away on holiday by using lights on timers and asking a trusted neighbour or family member to pop in and check everything is OK

[www.evolutionwindows.com](http://www.evolutionwindows.com)

# PATMORE WATER SOFTENERS



Non  
Electric

Boiler  
Friendly

10 Year  
Guarantee

*150 Spring Road, Ipswich 01473 713600*  
*6 South Entrance, Saxmundham 01728 633007*

[www.patmorewatersofteners.co.uk](http://www.patmorewatersofteners.co.uk)

# MARBLE WORKS EAST ANGLIA LTD

## GRANITE & MARBLE SPECIALISTS

### KITCHEN WORKTOPS BATHROOMS • FLOORING DECORATIVE INTERIORS • TRADE & RETAIL

Marble Works East Anglia Ltd are Granite & Marble specialists supplying high quality worktops for kitchens and bathrooms to both trade and directly to the public.

This Suffolk based business was launched in 1996 by Directors John Prosser and Richard Westaway and now employs 15 experienced staff at our workshop and showrooms in the centre of Ipswich.

We only use the finest materials from around the world.

Recent advances in the production of Granite, Quartz and Marble worktops have made what was once only for the few, more affordable to everybody.

We also have many off cuts available at discounted prices for those smaller projects around the home.

#### **Special Maintenance Offer:**

Clean worktops, re-seal worktops, remove lime scale, re-mastic gaps, fill any chips, joint repairs, all for only **£99.99 + VAT.**



Marble Works East Anglia Ltd.,

Unit 12, Farthing Road Industrial Estate, Ipswich IP1 5 AP

T: 01473 288776 F: 01473 281563

E: [enquiries@marbleworkseast.co.uk](mailto:enquiries@marbleworkseast.co.uk) W: [www.marbleworkseast.co.uk](http://www.marbleworkseast.co.uk)



# Cinamon Spiced Fig “Mess”

Head Chef Alan Ford of Hintlesham Hall

## 6 Portions

### Ingredients

9	Figs
¼ lt	Double cream
2x50g	Caster sugar
1 tsp	Powdered cinnamon

## Meringue

3	Egg whites
75g	Caster sugar
75g	Icing sugar-sieved
	Seeds of one vanilla pod

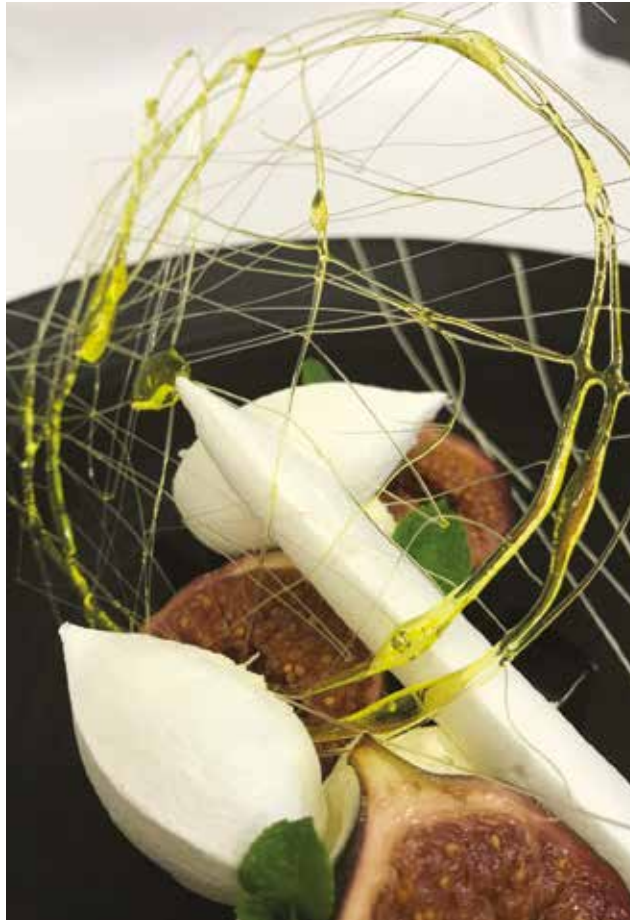
## Jelly

200ml	Red wine
50g	Caster sugar
1	Cinnamon stick
6	Cloves
	Juice of one orange
2	Gelatine leaves

## Green caramel

4oz	Caster sugar
1 tbsp	Water
	Green food colouring

*continues over*





# Cinamon Spiced Fig “Mess”

---

## Method

---

1 Whisk the egg whites, gradually add the caster sugar and seeds from the vanilla pod, whisk to firm peak, fold in the icing sugar. Pipe or mould onto a non-stick baking mat or greaseproof paper. Place in oven on a very low heat (100C) and leave until dried out. Remove from oven and store in an airtight container

2 Heat the red wine with the sugar, cinnamon stick, cloves and orange juice. Soak the leaf gelatine in

cold water, remove wine from heat and add the softened gelatine to the wine, stir until dissolved, strain and pour into a shallow container lined with cling film, allow to cool, refrigerate.

3 Cut figs in half, dust with cinnamon powder then sprinkle with caster sugar, place under the grill on a low heat and gently cook until the sugar has dissolved and the fig becomes a bit soft crispy. Remove from heat, allow to cool, refrigerate.

*EVERYTHING UP TO THIS STAGE CAN BE PREPARED A DAY IN ADVANCE*

---

## To serve

---

For the caramel, bring the sugar and water to the boil, simmer gently, when you see first signs of the sugar starting to turn colour, remove from heat, add 3 or 4 drops of green food colouring, it will bubble a bit, dip a spoon into the caramel, remove, when a thin strand of sugar flows from the spoon

drizzle onto a piece of very lightly oiled greaseproof paper to the shape you desire.

Cut the jelly into small squares, pipe cream down centre of plate, place 3 halves of fig on cream, then 3 cubes of jelly, top with 3 pieces of meringue, drizzle with fig juice then top with green sugar.





BESPOKE DESIGN ■ MANUFACTURE ■ INSTALLATION



KITCHENS ■ BEDROOMS ■ BATHROOMS ■ STUDIES

SHOWROOM OPENING TIMES

Monday to Friday: 9am – 5pm, Saturday: 10am – 4pm

The Granary, Rendlesham Mews, Rendlesham, Woodbridge, Suffolk IP12 2SZ. T: 01394 421214

[www.debenvale.com](http://www.debenvale.com)

SUFFOLK CARPET  
FLOORING SPECIALISTS  
EST 1988

WEAVERS



The only limit is your

# *Imagination*

Have you been looking for a patterned carpet or rug but can't find what you want? Look no further! What ever design & colour you want we can make your idea a reality



We also specialise in traditional carpets, high quality vinyl flooring, rug cleaning, servicing and repairs.

---

01394 610202

[www.suffolkcarpetweavers.com](http://www.suffolkcarpetweavers.com)

Unit 5 Bridge Business Park, Top Street, Martlesham, IP13 4RB



## Expert Comment on New Trends for 2017/18



Andy Briggs, head creative and resident interior designer for Spaceslide, identifies the new 2017/2018 trends in colour, texture, space and furniture functionality for the year ahead, and reveals how these latest styles can be incorporated within the bedroom...

— see overleaf —

## Expert Comment on New Trends for 2017/18



“Having visited some of the most influential industry shows for 2017/2018, the popular trends focussed on how homeowners can make optimum use of their space. With houses and apartments becoming increasingly smaller due to the strain of urbanisation, there is a need for clever solutions to expand room space, or at least create that illusion.

“When it comes to portraying the illusion of space, adaptable furniture and bright colours are becoming more widespread. Living in a contemporary, fast-paced culture, but also feeling relaxed and comfortable in the home, was a challenge that was addressed at the design shows, of which I visited IMM Cologne, Stockholm Furniture & Light Fair, and Salone Milan.

“There are some simple tricks to make a room appear larger, and plain white is not the answer. I would advise using tints of light blue and gentle green in a room to evoke a soothing setting, making a room feel spacious and breathable. In particular, ocean blues and forest greenery are a significant style for this year.

“Alternatively, consider other subtle tones such as powder pink or cashmere. These beautifully complement a room where soft grey shades are used as the base.

“Try and include some of the wood effects that are prominent for this year, such as natural oak,

washed-out oak, and walnut, to add depth to the room.

“There is a desire for the home to be designed with more individuality. With this in mind, the bedroom should be the most personable space within the home. You can effortlessly achieve uniqueness by mixing and matching bedroom finishes – something we’ve already seen our customers doing with our popular three panel doors, with a variation of textures being chosen to create a bespoke look that incorporates the latest fashions.

“My preference would combine the new wardrobe finishes from Spaceslide, such as the Nordic Teal Panel and Satin Cashmere Glass, and use with our Bronze Mirror, to achieve a refreshing and uplifting vibe. These natural colours work perfectly with the calm powder pink and cashmere hues.

“However, if grey is more to your taste, opt for our new Denim Blue Panel with Cape Elm wood effect, that combined with the Grey Mirror sliding doors achieve a contemporary, charcoal decor.

“Whatever your choice may be, you have the opportunity to make your bedroom completely unique. And by following the new trends for this year, it will become your haven of sophistication.”

[www.spaceslide.co.uk](http://www.spaceslide.co.uk)



# mymow

WITH ALL THE TRIMMINGS

mowing, trimming, hedging,  
landscaping, fencing, digging...

We are a local, reliable, family run grass cutting and garden maintenance company. We will provide you with an honest and reliable service and a perfectly cut lawn to enjoy all year round. Ask us for quotes on fencing and other groundwork too!

Visit our website to meet the mymow team and call us today for a free consultation.

rob@mymow.co.uk  
www.mymow.co.uk  
07747 037 503

## We clean your home, so you don't have to!

Love having a clean home, but hate cleaning? Struggle to find the time to give your pad the spit and polish it truly deserves?

Then never fear! At **Superior Home Cleaning** we know there's more to life than scrubbing floors and cleaning windows.

We know you're busy and we know you'd rather be spending your evenings and weekends with friends or family rather than cleaning your home from top to bottom.

**That's where we come in.** We provide a complete range of domestic cleaning services to get your home looking as good as new.

So whether you need someone to come round every other day or just clean the place up before your mother-in-law comes to stay, **Superior Home Cleaning can help.**

- ✓ Complete domestic cleaning services for homes in Woodbridge, Ipswich and surrounding areas
- ✓ Washing and ironing services
- ✓ Tailored cleaning solutions to suit you, at times that suit you

“ Professional, friendly, dedicated ”  
Mr Wood Ipswich

“ I've never seen my place so tidy! ”  
Mrs Holt Kesgrave

Proud To Be Part Of...



THE TOP ONE PERCENT  
2017/18



**£20 cashback**  
on your 4th regular clean  
JUST QUOTE  
"Coast"

**Call us now on 01394 432018**  
to find out more or to book your first clean!

**Howdens Ipswich**  
8 Crompton Road  
Hadleigh Road Ind. Est.  
Ipswich IP2 0UQ  
01473 230224



**Howdens  
Martlesham Heath**  
25 Anson Road  
Martlesham Heath  
Ipswich IP5 3RG  
01473 613170

[www.howdens.com](http://www.howdens.com)

**FEATURED RANGE:  
FAIRFORD  
SLATE GREY**

Create the ultimate in stylish kitchens by using a slate grey Shaker style door with a wood grained detail and replace the wall units with colour-matched custom-made open shelving to replicate the look of a traditional Georgian kitchen.

A solid oak block worktop with a profiled finish, matching table top and an inlaid tiled floor complete this rustic look.



**FEATURED RANGE:  
FAIRFORD  
GRAPHITE**

Fairford is perfect for creating your own unique look by mixing and matching colours or making a statement with a single striking colour such as Graphite.)A matt graphite Shaker-style door with a customised, gold coloured island and accessories helps to create a very trendy and moody look with a touch of the Orient.

*Fairford kitchen frontals have FSC® certification, excluding framed décor cabinet options.*



**BOOK YOUR FREE HOME SURVEY & KITCHEN DESIGN**

Contact your local depot to book your free design appointment.

Our fully trained designers visit you at home to measure your space and help bring your dream kitchen to life.

Then, using Howdens' 'My Kitchen' service, your plans will then be supplied to you as a selection of high quality images, a 3D plan, a walkthrough video and a 360° panoramic view.



## Festive Favourites

# The Holly & the Ivy

It will soon be Christmas, and what better way to celebrate the season and bring festive cheer to your garden than with two traditional Christmas favourites - Holly and Ivy. Countless cards carry their image, often with leaves touched by frost or covered with a crisp layer of snow, and your garden displays will have even greater appeal.

These are perfect garden plants, and they'll provide material for indoor arrangements and table decorations too. What better way to welcome visitors over the Christmas period than with a woven wreath made using holly, ivy and other seasonal flowers and foliage picked from the garden.

Both plant families offer a wide range of wonderful evergreen varieties, with many boasting beautifully variegated leaves. Fruits and berries provide seasonal food for hungry birds, but if you want a few sprigs to enjoy indoors you'll need to protect berry-laden branches with pieces of tightly fastened fine netting or fleece to keep birds away.

Holly is hardy and evergreen, making it an ideal shrub to form part of the backbone or structure every garden needs. The common or English Holly (*Ilex aquifolium*) grows across the country, but as well as choosing holly with glossy green leaves there are lots of different cultivars with more colourful foliage.

Most holly plants are either male or female, so to ensure you get a crop of berries you'll need to grow a female variety and ensure there's a male nearby to pollinate its flowers. However, don't always take the name as a guarantee of the plants sex, as the popular

— *continues overleaf* —

# Festive Favourites

## The Holly & the Ivy

— continued —

'Silver Queen' is actually male, and 'Golden King' is a female berry-bearing variety! If you want berries and only have room for one plant then look out for self fertile 'J.C. van Tol' which also has almost thornless elliptical green leaves.

With thick evergreen growth and spiny foliage, holly is also a good choice of shrub to form a dense and secure boundary hedge to your property. Most varieties carry spiny leaves, but for something with extra deterrent consider the variegated Hedgehog Holly (Ilex 'Ferox Argentea'). Holly can also be tightly clipped into formal shapes and topiary too.

Leaf sizes and shapes vary enormously between varieties, so explore the Ilex family to discover more. For instance, the Box-leaved or Japanese Holly is often used to create small topiary features. Or for something a little different search out varieties of Blue Holly (Ilex x meserveae) that produce deep green leaves with a bluish tinge.

Ivy is a valuable climber or ground cover plant, perfect for a shady spot or for cladding bare fences or garden structures. However, it must be kept within bounds with regular pruning to prevent it spreading too far or becoming invasive.

Hundreds of varieties have been bred over the years, and many garden favourites have colourful leaf forms or attractive variegated patterns adding to their appeal. Established ivy carries flowers late in the season that provide valuable nectar for late-flying butterflies and bees, as well as great nesting site opportunities for blackbirds and others. Small-leaved ivy trails gracefully down the sides of baskets and containers, the perfect partner for many flowering and foliage plants.

So, for a traditional touch to your seasonal displays, check out the varieties of Holly and Ivy available at your local garden centres and nurseries now.

### Top four favourite Holly varieties

From green to gold, silver and cream, choose holly varieties that add interest to your garden right through the year, including these award-winning varieties:

**'Golden King'** - Berrying female variety

**'Silver Queen'** - Male variety

**'J.C. van Tol'** - Self-fertile berrying female variety

**Hedgehog Holly** (Ilex 'Ferox Argentea') - Male variety

### Top four favourite Ivy varieties

Dozens of ivy varieties are available, and many of the best have received an Award of Garden Merit (AGM) from the Royal Horticultural Society. Here are a few of the most popular ivy varieties to consider for your garden and patio pots:

**'Sulphur Heart'** (also sometimes called 'Paddy's Pride')

Hedera colchica **'Dentata Variegata'**

**'Glacier'** - versatile variegated variety, often used in indoor arrangements

**'Ivalace'** - attractive crimped and lobed green leaves

[hta.org.uk](http://hta.org.uk)





# The perfect tiles for all the family

Supplying Suffolk with beautiful exclusive  
tiles since 1998.

**Just Tiles**  
TILE SHOWROOM

Smithfield, Melton  
Woodbridge IP12 1NH  
t: 01394 382067

[justtileswoodbridge.co.uk](http://justtileswoodbridge.co.uk)

## R B F CARPENTRY & JOINERY

### Sash Window Repair & Renovation

- Bringing traditional sash windows back to their former glory
- Choose draught sealing with this service and reduce noise and energy costs
- Complete bespoke replacement of box sliding sashes as an option (if beyond repair or double glazing required)



- ALL CARPENTRY WORK UNDERTAKEN
- SASH WINDOW SPECIALIST
- OVER 30 YEARS EXPERIENCE
- REASONABLE RATES AND PERSONAL SERVICE

### Carpentry and Joinery

- Bespoke service in joinery
- Doors supplied and fitted
- Fitted wardrobes
- Kitchen fitting
- No obligation estimates
- Expert advice is part of our service



**TEL: 01394 279128 MOBILE: 07968 145279**

# Your guide to the best Firework Displays

## 3rd November

St John's Family Fireworks Display takes place at Ransomes Sports and Social Club, Sidegate Avenue, Ipswich. This highly acclaimed fireworks display with family friendly entertainment and refreshments includes family entertainment suitable for ages 1 to 101! Gates open 6.15pm, with the display starting at 7.30pm. All proceeds are in aid of St John's CEVAP School PTA



## Saturday 4th November

Fantastic night of fireworks and family entertainment in store at regions biggest Guy Fawkes event! The big night out will star East Anglia's premier soul and funk band 'Soul Riot', performing alongside Essex & Suffolk's largest award winning modern choir 'Funky Voices' and outstanding professional female vocalist 'Chelsea Francis'. The main feature will be another sensational musical fireworks display brought to you by 'Alchemy Fireworks', accompanied by a chart-topping soundtrack. There'll be all the fun of the fair, catering stalls, a bar, roaring bonfire and more family-friendly entertainment. Fire performance troupe, 'Tri Fie R' will mesmerise the audience with their awe-inspiring fire dance routines and create a unique and energetic atmosphere in the park. Gates open at 6pm with fireworks at 8pm and family fun through to 10pm. [www.ipswichfireworks.com](http://www.ipswichfireworks.com)

## Saturday 4th November

The Framlingham Firework Spectacular takes place at The Pageant Field, Badingham Road, Framlingham. Kimbolton Fireworks will be providing another memorable firework display complete with some unique effects and high quality fireworks suitable for all the family. There is a designated area for sparklers, which may be bought on the night, (no sparklers may be brought onto the field). Refreshments will be on sale, including Mulled wine, Earl Soham Beer, Hall Farm Butchers hot dogs and burgers, Sweet Sunrise Crepes, Smoked Pork and Beef with local rolls and chutney, Chilli and Thai food as well as Chips, Candy floss, Speciality Coffees and Waffles, with lots of Vegetarian/Vegan options available. Framlingham Guides will also be providing hot soup and hot and cold drinks. Gates open at 6pm, Bonfire lit at 6.30pm, Firework Display at 7.30pm, £6 adults & £4 children.

## Sunday 5th November

Family friendly fireworks will be at Jubilee Park, Mayhew Road, Rendlesham. Wrap up warm and come and enjoy a family friendly event with a fabulous Funfair and Fireworks. Food will be provided by Rendlesham firm favourites The Wandering Grill and Wood Fired PizzaPaella. Rendlesham Scouts providing tea/coffee/hot chocolate and a selection of sweet treats and Friends of Rendlesham School (FORS) providing glow sticks. All at reasonable prices. The event will close with a BANG as Kimbolton Fireworks provide a spectacular fireworks display. Free parking. Amusements open at 3pm with fireworks at 6.30pm.



# Essential guide & listings

## Exhibition ■

**30th October – 25th November**

Cambridge based Karen Stamper is a very busy exciting and active collage artist having exhibited throughout the U.K. since her last show here. So we are very privileged to have her returning to the John Russell Gallery, with a new collection, this time with a theme of urban shoreline. The John Russell Gallery, 46 Wherry Lane, Ipswich, 9.30am - 5.00pm Monday to Saturday

## Craft Fair ■

**4th November**

A local craft fair where local people sell their handmade items. A variety of beautiful goods are available with prices starting at £1.50. Handmade cards, cakes, quilts, fabric goods, wood ware, jewellery and many other items are on display and crafters like nothing more than to talk about their skills and how their goods are made. You can even sit down and have a cup of tea or coffee with a slice of homemade cake or new for this year bacon sandwiches! Saxmundham Market Hall, High Street, Saxmundham, 10.00am to 2.00pm

## Talk by Mia Philips - A Whole New Way of Looking at Mental Health ■

**4th November**

This talk is for anyone who is interested in uncovering a totally new way of understanding our mental and emotional wellbeing and how we already have everything within us for peace of mind, ease, grace etc. Worry, anxiety and depression feel very real and we have a very real experience of them, but they are made in and of thought - and as thought changes so can our experiences of these more difficult feelings. Come along and join in to find out more about the Three Principles of Mind, Consciousness and Thought, a simple insight

### Key to listings

- Theatre
- Cinema
- Arts

- Music & Dance
- Outdoor
- Markets
- Other

based understanding which has no techniques and there's nothing to do, except listen and effortlessly reconnect with your innate wellbeing. Woodbridge Library, 10.15am - 11.45am, Price for the talk is £5.00. Pay on the door. For more information see [miaphilips.com](http://miaphilips.com).

## The Friends of Highlands Care Home

(Member of Abbeyfield Society)



## Christmas Coffee Morning

Stalls, raffle, tombola

**At Highlands**

Fitzgerald Road  
Woodbridge

**Saturday 2nd December**

**At 10-00**

Please come along and support  
your local care home.

## Talk by author Maggie O'Farrell ■

**6th November,**

Bestselling novelist Maggie O'Farrell is coming to Woodbridge Library, as a guest of Browsers Bookshop, to talk about her much reviewed memoir 'I Am, I Am, I Am'. You will probably have seen something of the intense media attention this book has attracted. Maggie is such a popular, and award-winning, writer - recent bestsellers among her seven novels have included 'The Vanishing Act of Esme Lennox', 'Instructions on a Heatwave' and 'This Must Be The Place'. Maggie hasn't been keen to talk about her personal life or take part in events to promote her books, until now. She chose to write this very revealing account of her life initially to support her young daughter who has a very challenging condition experiencing severe allergic reactions. The tickets are priced at £8 and will include a complimentary glass of wine on arrival and a £5 discount on a purchase of the book (RRP £18.99). 7.30pm, Tickets available from Browsers Bookshop, 60 Thoroughfare, Woodbridge (01394 388890). (If you don't want to wait until the evening for your copy, buy it at Browsers at the same time as your ticket and you'll still receive the discount.)

## Sea Spice Cooking Class ■

**9th November**

Step by step professional tuition by Award winning Chef Rawat. Learn how to cook in the authentic style, and enjoy a fun experience in the Sea Spice kitchen. With Christmas just weeks away, why not serve your guests something different over the festive period. With that in mind, chef will teach you how to make a two-course meal that will impress your guests, and make a nice alternative to the usual festive feast. Each class will cover two courses, all ingredients and recipes are provided, and you will eat what is cooked at the end of class, Sea Spice, White Lion Hotel, Market Cross Place, Aldeburgh, IP15 5BJ, To book telephone 01728 451800

## Coffee Morning ■

**11th November**

Delicious homemade cakes and produce, a fantastic array of items for sale, champagne & chocolate raffle, hamper raffle, tombola, christmas cards, grand draw - 1st prize £50, The Market Hall, Saxmundham, 10am - 12.30pm, admission £1 including coffee.

# Farmers Markets

## Aldeburgh Farmers Market

Aldeburgh Church Hall, 3rd Saturday of the month.  
From 9.00-12.30pm.

## Assington Farmers Market

Held on the 2nd Sunday of every month from 10-2pm at The Barn, Assington, CO10 5LW.

## Felixstowe Market

Every Sunday, adjacent to Arwela Road, off Sea Road, 8am to 4pm.  
Clothes, household items, plants, books.

## Framlingham Market

Every Saturday in The Square.

## Halesworth Produce Market

2nd Saturday monthly.  
Contact: 01223 457524.

## Jimmy's Farm - Farmers Market

Pannington Hall, Wherstead, 9am-1pm (1st Saturday of every month).

## Snape Maltings Farmers Market

1st Saturday of each month from 9.30am to 1pm, with free car parking, shops, galleries and river walks.

## Southwold Farmers Market

Adnams Cellar and Kitchen Store. Every Friday 9am-12.30pm.

## Woodbridge Farmers Market

Woodbridge Community Hall, 2nd and 4th Saturday of the month, 9am-1pm.



# Christmas Events at Snape Maltings

## 11th November

McLaren's Christmas pudding tasting  
Come and visit the McLaren's tasting station sampling delicious Christmas Puddings with desert designer Sandra in Snape Food Hall from 11am until 2pm.

## 11th November

Workshops at the Tack Room - Stained Glass for Christmas with Naomi Brangwyn, Make a selection of tree decoration or perhaps a small hanging panel. Suitable for beginners to improvers. £85, light lunch included, book online. 10am – 5pm

## 1st – 10th December

In The Land of Oz presented by Co-op Juniors Theatre Company

## 17th December

Father Christmas arrives by Thames Barge - In time honoured tradition, Father Christmas sails into Snape Maltings by Thames barge (approx. 12.30pm), followed by the opportunity for children to meet him in the House & Garden shop.

## 17th December

Family Crafts - Festive craft making at the Concert Hall Café. No need to book, just drop in and enjoy!



## 17th December

Throughout December a Peace Tree will take residence outside Snape Maltings Concert Hall, giving visitors the opportunity to write messages on baubles and add them to the tree.

## 18th November

Taste award winning spirits with William Chase - Head to the Food Hall to taste products from Chase, the first Single-Estate distillery in the UK. They grow their own raw materials, then hand make and hand bottle all of their products on their family farm in Herefordshire. Their vodka has even been named best in the world! 11am – 3pm

## 24th December

Christmas Farmers' Market - The finale of the Snape season of events is the special Christmas Farmers' Market, which offers locally sourced fresh produce and artisan products. 9.30am – 1.30pm

## Everyman Folk Club ■

### 24th November 2017

Everyman Folk Club are thrilled to bring you a wonderful trio of familiar faces in a new collaboration. Kevin is an excellent guitarist, Carolyn is an acclaimed singer, and Paul is a top accordionist. Together, they will take us on an incredible musical journey, interpreting songs and tunes from Playford to the Stones, and from the far corners of the earth, in a way you have never heard before! The Everyman is held at The Riverside Centre, Gt Glemham Road, Stratford St Andrew, Saxmundham, Suffolk IP17 1LL. All events start at 8pm, with the bar opening at 7.30pm. Tickets are only £5 if bought in advance, otherwise £6 on the door (subject to availability). For advance ticket sales please contact Mary & Steve on 01449 615523, [www.wheatstone.co.uk/everyman](http://www.wheatstone.co.uk/everyman)

## Framlingham Christmas Lights Switch On ■

### 25th November

Framlingham will be holding a celebration to officially switch on the Christmas Lights at 5pm. All are

welcome to join in with this popular event. Come and join in the singing and traditional celebration to mark the start of the Festive season in the beautiful market town of Framlingham.

## A Christmas Recital ■

### 8th December

Festive-themed recital in the intimate setting of Britten's Library with harpist Olivia Jageurs who was recently shortlisted for a 2017 Royal Philharmonic Society award for her social media project 15 second harp. The Programme will include Britten's Suite for Harp and the Interlude from A Ceremony of Carols. The Red House, Golf Lane, Aldeburgh, tickets 01728 451 700

## Otley House Christmas Tour ■

### 14th December

Christmas tour is a popular way to start the festive celebrations, and following the tour is mulled wine and nibbles in the Great Hall, lit by candle light and roaring log fires. Otley Hall, Hall Lane, Otley, 6.30pm



# On the Big Screen

## New and Forthcoming Movie Releases



### **Thor: Ragnarok**

The God of Thunder returns in 'Thor: Ragnarok', a race against time to stop the destruction of Asgard at the hands of the ruthless, incredibly powerful Hela. She's destroyed his mighty hammer Mjolnir and hurled him to the other side of the universe. He has to get back and stop her – but first, he finds himself imprisoned and forced to fight in a gladiatorial arena.



### **Geostorm**

When the world's climate-controlling satellites stop working, a satellite designer and his estranged brother must travel to space and work together to save the planet from total destruction. It's a race against the clock to uncover the real threat before a worldwide geostorm wipes out everything.



### **Paddington 2**

'Paddington 2' continues the adventures of the little bear from darkest Peru, now that he's a permanent member of the Brown family and a popular member of the local community. His Aunt Lucy's 100th birthday is coming up, and he's trying to find the perfect present for her. A unique, antique book could be exactly what he needs – but when a dastardly thief snatches it, it's up to Paddington and the Browns to catch him and get it back.



### **Breathe**

'Breathe' tells the extraordinary story of Robin Cavendish, a young, daring and adventurous man whose life was changed forever after polio left him paralysed at the age of 28. Unable to move from the neck down and given only three months to live, he became a pioneering advocate for disabled people. He and his wife Diana travelled the world, trying to improve and transform the lives of other people like Robin.

## Coming Soon...

Wonder – December

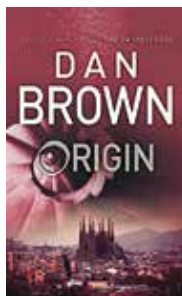
Star Wars: The Last Jedi – December

The Greatest Show Man – January

Three Billboards Outside Ebbing,

Missouri - January

# What we are reading...



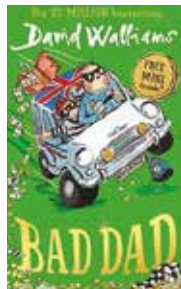
## **Origin — Dan Brown**

Robert Langdon, Harvard professor of symbology and religious iconology, arrives at the Guggenheim Museum Bilbao to attend the unveiling of a discovery that “will change the face of science forever”. The evening’s host is his friend and former student, Edmond Kirsch, a forty-year-old tech magnate whose dazzling inventions and audacious predictions have made him a controversial figure around the world. But Langdon and several hundred other guests are left reeling when the meticulously orchestrated evening is blown apart before Kirsch’s precious discovery can be revealed. With his life under threat, Langdon is forced into a desperate bid to escape, along with the museum’s director, Ambra Vidal.



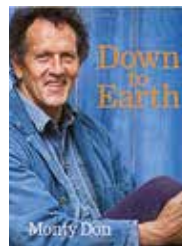
## **A Better Me — Gary Barlow**

In his extraordinarily honest memoir *A Better Me*, Gary tells of his journey back to professional success and mental and physical health. From reforming Take That to critical and commercial acclaim and reigniting his own legendary songwriting career; to overcoming his weight problems and crippling obsession with food; to TV judging panel stardom on *The X Factor* and *Let It Shine* and at last finding balance in both his personal and professional life. *A Better Me* is a remarkably frank memoir of Gary’s life, honest and raw and as we’ve never seen him before.



## **Bad Dad — David Walliams**

A high-speed cops and robbers adventure with heart and soul about a father and son taking on the villainous Mr Big – and winning! This riches-to-rags story will have you on the edge of your seat and howling with laughter! *Bad Dad* is a fast and furious, heart-warming story of a father and son on an adventure – and a thrilling mission to break an innocent man into prison!



## **Down to Earth: Gardening Wisdom — Monty Don**

Discover Monty’s thoughts and garden ideas around nature, seasons, colour, design, pests, flowering shrubs, containers, and much more. Read about the month-by-month jobs he does in his own garden that he hopes are relevant to you. Monty’s intimate and lyrical writing is accompanied by photos of his garden, showing areas rarely seen on television. This is the perfect gift for the gardener in your life.

# Eating Out...

## Our Top Rated Eateries in and around Ipswich

Aqua Eight	8 Lion Street	218989
Berridges	4 Dial Lane	225525
Bistro on the Quay	3 Wherry Quay	286677
Lanterns	16 Falcon Street	230185
Buttermans	Woolverstone	780803
Church's	Hatton Court	219138
Dhaka Restaurant	6 Orwel Place	251397
The Fountain	Tuddenham St Martin	785377
Hintlesham Hall	Hintlesham	652334
Mariners	Neptune Quay	289748
K Bar and Grill	33/7 St Nicholas St	215721
Last Anchor	Haven Marina	214763
The Manor Restaurant	Belstead	684241
Milsolms at Kesgrave	Kesgrave	333741
Quayside	12 Regatta Quay	218811
Salthouse Harbour	Salthouse Quay	226789
Seckford Hall	Woodbridge	01394 385678
The Valley	Fynn Valley Golf Club	785202
Ufford Park Hotel	Melton	01394 383555
@twentyfive	25 St Nicholas St	287625

## Wine Bars and Bistros

Arlingtons	13 Museum St	230293
Bowmans	Falcon Street	218118
Church's	Hatton Court	219138
Curve Bar	58 Princes Street	212008
Degero	11 St Nicholas St	213010
Isaacs	7 Wherry Quay	284000
K Bar and Grill	33/7 St Nicholas St	215721
Poets Bistro	1 Arcade St	225995
The Waterfront	15 Regatta Quay	226082
Yates	Tower Street	341920
The Wine Bar	10 Tacket St	280000

## Indian Restaurants

A Passage to India	27-29 Fore St	281110
Gandhi	8 St Peter's St	286058
Indian Palace	39 Upper Orwell St	212414
Keralam	24 St Helens St	288599
Maharani	46 Norwich Rd	232266
Masha	200 St Helens St	255236
Orissa	10-12 St Nicholas St	232439
Sonar Bangla Balti	37 Woodbridge Rd	210763
Taj Mahal	40-42 Norwich Rd	210722
Zaika	17 St Nicholas St	210110

## Fusion Restaurants

Mizu Noodle Bar	10 Cornhill	288839
-----------------	-------------	--------

## Mexican Restaurants

Chimichanga	Cardinal Park	254112
-------------	---------------	--------

## Chinese Restaurants

East Ocean	25 Fore St	255545
Golden Dragon	Cardinal Park	232888
Mister Wing	7 St Helen's St	212885
No.96	71 St Matthews St	679272
Trongs	23 St Nicholas St	256833

## Thai Restaurants

Baipo Thai	63 Upper Orwell St	218402
Kwan Thai	14 St Nicholas St	253106

## Moroccan/Lebanese Restaurants

Casablanca	12 Tacket St	871586
------------	--------------	--------

## Brazilian Restaurants

Rios Brazil	28 Gt Coleman St	222335
-------------	------------------	--------

## Turkish Restaurants

Alaturka	9 Gt Coleman St	233448
----------	-----------------	--------

## Leading Cafés

Caffé Basso	18 Tacket Street	288222
Coffeelink	Neptune Marina	210620
Danceeats! Café	Foundry Lane	295230
The Sanctuary	St Nicholas Centre	298508
Patisserie Valerie	19 Buttermarket	212392

## National Chains

Ask	Cardinal Park	210443
Frankie & Benny's	Cardinal Park	231732
Loch Fyne	1 Duke St	269810
Nandos	Cardinal Park	211668
Pizza Express	24-26 Lloyds Ave	212651
Pizza Express	13 Regatta Quay	288600
Zizzi	11/13 St Nicholas St	230055

## Ipswich Public Houses

The Black Tiles	Martlesham	624038
The Dove	St Helens St	211270
The Fat Cat	288 Spring Rd	726524
Gardeners Arms Sports Bar		
	77 Fore Hamlet	284000
The Greyhound	9 Henley Road	252862
The Spread Eagle	1-3 Fore Street	256093
The Woolpack	1 Tuddenham Rd	253059



## Woodbridge Eateries (01394)

The Anchor	Quay Street	382649
The Angel	Theatre Street	383808
Crown Hotel	Thoroughfare	384242
East Coast Diner	2 Church Street	389076
The Galley	Market Hill	380055
Grove House Hotel	Grove Road	382202
Golden Panda	Cumberland Street	384493
The King's Head	Market Hill	387750
Notcutts Gdn C'tre	Ipswich Rd	445400
Olde Bell & St'yard	103 New Street	382933
Riverside	Quayside	382587
Savola at The Bull Hotel	Market Hill	382089
Seckford Hall Hotel	Woodbridge	385678
Wild St'berry Café	19a Market Hill	388881
Ufford Park Hotel	Melton	383555
The Plough	Sutton	411785
The Duke of York	Woodbridge	386347
The Old Mariner	New St	382679
The Royal Bengal	4-6 Quay St	387983
The Table	Quay St	382428
The Castle	Bredfield	385927

## Eateries Further Afield! Aldeburgh area (01728)

The Brudenell Hotel	The Parade	452071
The Chequers	Friston	688039
Dog & Duck	Campsea Ashe	746211
The Dolphin	Thropeness	454994
Fish & Chip Shop	High Street	452250
The Lighthouse	77 High Street	453377
Regatta Restaurant	171 High Street	452011
The Wentworth	Wentworth Rd	452312
The White Lion	Market Cross Place	452720

## Bromeswell (01394)

The Unruly Pig	Orford Road	460310
----------------	-------------	--------

## Dunwich (01728)

The Ship Inn	Dunwich	648219
--------------	---------	--------

## Felixstowe (01394)

The Alex	123 Undercliff Road	282958
Cafe Bencotto	128 Hamilton Road	276745
Orwell Hotel	Hamilton Road	285511

## Southwold Pubs (01502)

Harbour Inn	Backshore	722381
The Lord Nelson	East Street	722079
The Sole Bay Inn	East Green	723736



THE MOON  
& MUSHROOM

High Road, Swilland – 01473 785 320  
moonandmushroom@gmail.com  
www.themoonandmushroom.co.uk

## Framlingham (01728)

The Lemon Tree	3 Church Street	621232
The Crown	Market Hill	723521

## Orford (01394)

Butley Oysterage	Market Hill	450277
Crown and Castle	Orford	450205
The Froize Inn	The Street, Chillesford	450282
The Jolly Sailor	Quay St	450243
The Kings Head	Front St	450271
Lady Florence River Cruises		07831 698298
The Oyster	Butley	459722

## Saxmundham (01728)

The Bell Hotel	High Street	602331
----------------	-------------	--------

## Stour Valley Area (01206)

The Boathouse	Mill Lane, Dedham	323153
milsoms	Stratford Rd, Dedham	322795
Le Talbooth	Gun Hill	323150
Bildeston Crown	High Street	01449 740510
The Sun Inn	High Street, Dedham	323531

## Snape (01728)

Plough & Sail	Snape Maltings	688413
The Crown	Snape	688324

## Thorpeness (01728)

Hotel & Golf Club	Lakeside Ave	452176
-------------------	--------------	--------

## Walberswick (01502)

The Bell Inn	Ferry Road	723109
--------------	------------	--------



THE FINEST HOLIDAY COTTAGES

sosouthwold.co.uk  
01502 543133  
reservations@sosouthwold.co.uk

Whatever you want to do  
in Suffolk, do it with Suffolk  
Cottage Holidays



*Birdwatching at  
Minsmere*



*Partying at Latitude*



*Concert at  
Snape Maltings*



*Golfing at  
Aldeburgh*



*Crabbing at  
Walberswick*



*Dining out in  
Southwold*



*or simply relaxing in  
your Suffolk Cottage  
Holiday home!*

SUFFOLK  
COTTAGE  
HOLIDAYS  
A member of the Ready to Travel Group



[www.suffolkcottageholidays.com](http://www.suffolkcottageholidays.com)



ASPENS JEWELLERS  
WOODBIDGE

## On Site Jewellery Repair Service

Jewellery repairs and alterations.  
Professional cleaning and polishing  
to restore the beauty of your  
treasured pieces, including  
refinishing of white gold jewellery.

5 Church Street Woodbridge  
Suffolk IP12 1DH  
Tel: 01394 389666

[www.aspensjewellers.co.uk](http://www.aspensjewellers.co.uk)



Your local holiday experts

[www.suffolk-secrets.co.uk](http://www.suffolk-secrets.co.uk)  
01502 722717  
[holidays@suffolk-secrets.co.uk](mailto:holidays@suffolk-secrets.co.uk)



Feasts *and*  
Festivities  
at  
THE CROWN  
*at Woodbridge*

We'd love to see you over the Christmas period  
and hope you can join us, whether it's for  
a festive lunch or party dinner.

To book, please call **01394 384242**  
[info@thecrownatwoodbridge.co.uk](mailto:info@thecrownatwoodbridge.co.uk)

For more information visit:  
[www.thecrownatwoodbridge.co.uk](http://www.thecrownatwoodbridge.co.uk)

# *Fall into autumn*



SOFAS | UPHOLSTERY | FABRICS | INTERIORS

At Jayrest Interiors we've got the latest in contemporary sofa styles and an amazing range of designer fabrics for you to choose from.

All Jayrest furniture is hand built by our craftsmen and come as standard with a Lifetime Guarantee on Jayrest solid beech frames and coil spring units.

## JAYREST INTERIORS

Telephone 01473 822 683 / 828 268

Jayrest Interiors, 47 Lady Lane Industrial Estate, Hadleigh, Suffolk IP7 6BQ



[www.jayrest.com](http://www.jayrest.com)